



MATILD PALACE

A LUXURY COLLECTION HOTEL, BUDAPEST

INDEX

[Budapest, Pearl of Danube](#)

[About Matild Palace](#)

[Guestrooms & Suites](#)

[Culinary Delights](#)

[Meetings and Events](#)

[Swan Spa](#)

[Hotel Contacts](#)

THE
LUXURY
COLLECTION®

BUDAPEST PEARL OF THE DANUBE





BUDAPEST

Budapest is one of Europe's most fabled cities with a wealth of connections (161 destinations and 951 flights per week), a storied heritage and many cultural sites, an exceptionally rich offering of natural thermal baths, an excellent culinary scene, a world-class classical music scene, a pulsating nightlife increasingly appreciated among European youth, many river cruise options, international festivals, and international sports events such as F1.



With its sheer grandeur and architectural splendor, this beautifully bridged European capital, located on the banks of the Danube river, is often called “The Pearl of the Danube” or “Paris of the East”.



THE
LUXURY
COLLECTION®

AN ICON RETURNS.
YOUR STORY BEGINS.

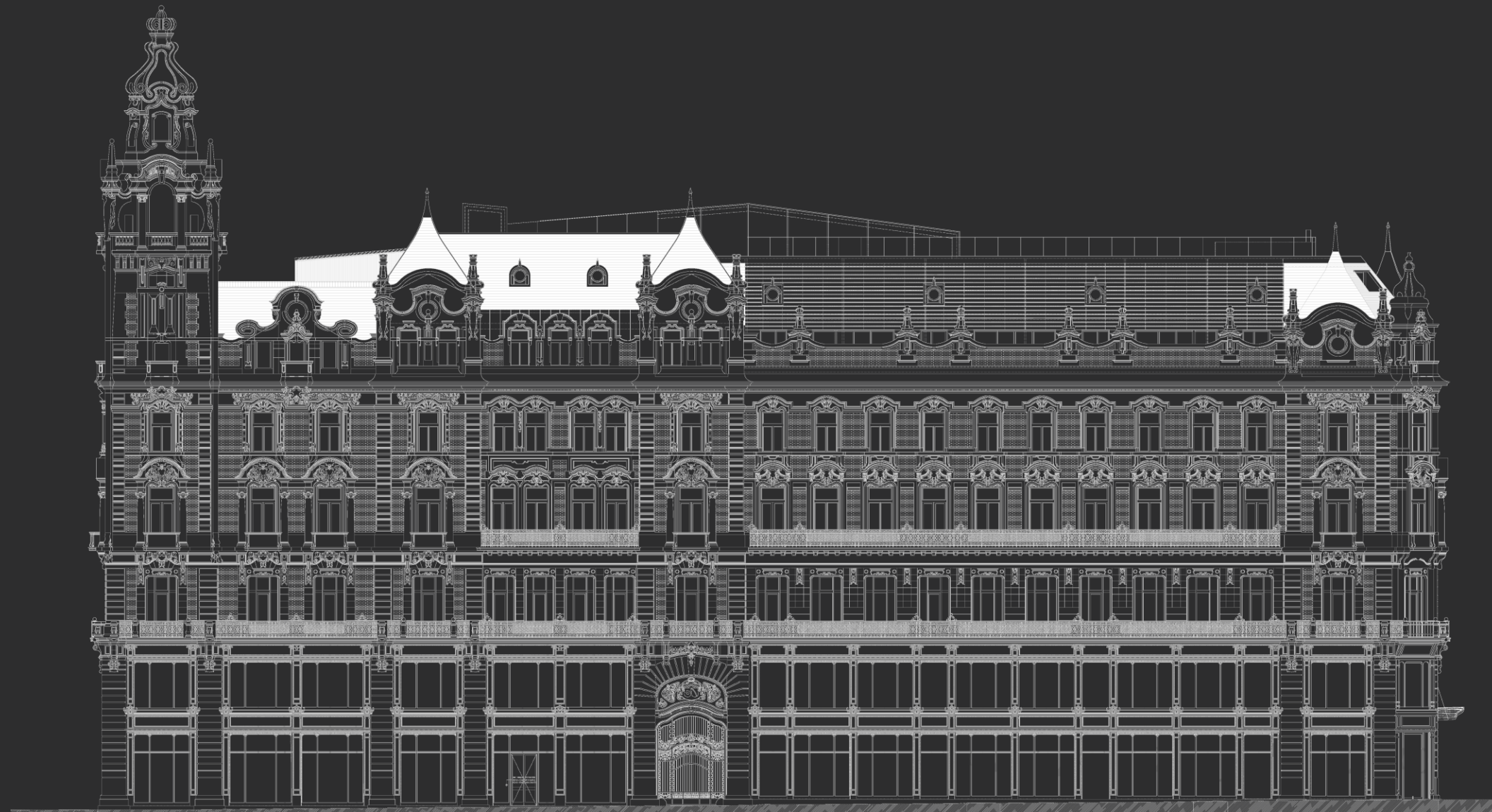
MATILD PALACE, A LUXURY COLLECTION HOTEL, BUDAPEST
HUNGARY

AN ICON RETURNS.
YOUR STORY BEGINS.

MATILD PALACE

Opening in Q3 2020, Matild Palace, a Luxury Collection Hotel, Budapest will redefine elegance in Hungary.

As one of the most iconic buildings in Budapest, the hotel boasts a highly distinctive ambience representative of its Hungarian heritage, which runs beautifully through its core and is unmistakable from the moment guests step foot through the front doors.



GATEWAY TO ALLURING BUDAPEST

Located in the heart of Budapest, between famous Váci Utca, Szabad Sajtó Utca, and Duna Utca, just a stone's throw from the Danube, and creating a gateway to Elizabeth Bridge.

- Budapest International Airport – 21 km
- Váci Street – 0 meters
- St. Stephen's Basilica – 1.2 km
- Széchenyi Chain Bridge – 1.2 km
- Buda Castle – 1.9 km
- Hungarian Parliament – 2 km
- Margaret Island – 4.3 km
- Heroes' Square – 3.5 km
- Hungarian State Opera – 1.4 km
- Gellért Hill – 1.5 km
- Széchenyi Thermal Bath – 4 km



MATILD PALACE

A TREASURED LEGACY

Built during the Belle Epoque era, in 1902, by Kálmán Giergl and Flóris Korb, the Matild Palace was developed under the patronage of Her Imperial and Royal Highness Maria Klotild of Saxe-Coburg and Gotha to serve as the social hub of the city. The Duchess dreamed of the twin palaces to greet those who enter the bridge as a graceful lady. Thus, the Duchess asked the famous architects, named after projects like Liszt Ferenc Academy of Music, to draw up the plans. Korb and Giergl envisioned of an English Baroque palace on either side of the road that would serve as the gateway to the bridge under construction.

The neo-baroque palace is listed as a UNESCO world heritage site and is under the monumental protection since 1977.



MATILD PALACE

A CENTURY OF INNOVATION

- The first elevator (OTIS Brand) started operating in this building.
- A Revolutionary construction technique for its time: constructed with a steel metal structure, then clad in decorative carved stone.
- Matild Palace has the first cafe house and shopping center opening after WW2.
- Gyula Krúdy produced the main bulk of his fictional work in the period 1897-1920, Szindbád, the symbolically reimagined figure of Sindbad the Sailor, the mythic wanderer of The Arabian Nights. The major parts of his series and novels were written in the Matild Palace.



MATILD PALACE

A VISIONARY DESIGN

The transformative design of Matild Palace by the award-winning MKV Design provides a journey: From an imperial palace once the epicentre of the city for the royalties and elite, to a modern new playground for today's discerning leisure and business traveller, self-confessed artisans of leisure, and local foodies.

Once inside, the effortlessly charming yet contemporary creature comforts of the Matild Palace are immediately recognisable and upon walking through the hotel, its design takes guests on an enchanting passage through time.



THE
LUXURY
COLLECTION®



MATILD
PALACE HOTEL
BUDAPEST

HISTORICAL PASSAGE
MATILD PALACE, A LUXURY COLLECTION HOTEL, BUDAPEST

THE
LUXURY
COLLECTION®



MATILD
PALACE HOTEL
BUDAPEST

LOBBY
MATILD PALACE, A LUXURY COLLECTION HOTEL, BUDAPEST



RECEPTION
MATILD PALACE, A LUXURY COLLECTION HOTEL, BUDAPEST



THE
LUXURY
COLLECTION®

GUESTROOMS AND SUITES



GUESTROOMS AND SUITES

AN INDIGENOUS EXPERIENCE

Guests will discover an exceptional choice of 112 elegantly appointed rooms and 18 suites, with the palatial high-ceiling bedrooms, spectacular Danube river views, and the convenience of family-friendly connecting rooms.

Guest rooms feature unique and delicate detailing such as headboards with Hungarian handcrafting, Hungarian style fish bone design parquet floors and artwork referencing Budapest literature.

- 112 guestrooms (30 – 51 sq.m.)
- 8 Elisabeth Bridge Suite (51 – 62 sq.m.)
- 1 Loft Suite (74 sq.m.)
- 7 One Bedroom Suite (54-64 sq.m.)
- 1 Crown Tower Suite (76 sq.m.)
- 1 Maria Klotild Royal Suite (150 sq.m.)



THE
LUXURY
COLLECTION®



MATILD
PALACE HOTEL
BUDAPEST

DELUXE ROOM





THE
LUXURY
COLLECTION®



MATILD
PALACE HOTEL
BUDAPEST

DELUXE ROOM, BATHROOM

THE
LUXURY
COLLECTION®



208

GUESTROOM CORRIDORS



MATILD
PALACE HOTEL
BUDAPEST

LOFT ROOMS

With the Duchess Klotild having so many creative friends, it seemed only right that she would want them to have their own quarters in the eaves of Matild Palace where there is an abundance of natural light and inspiration. She allowed them to create their own distinctive style where they would feel most at home in the city. To be true to this ethos there are the Loft rooms.

Located at the rooftop of Matild Palace, they provide endless views across Budapest from a low comfortable leather bed. A contemporary mix of furniture and lighting adorns the rooms as well as a colourful vintage style accent. Guests can find a modern platform sofa with storage for all accessories and equipment a modern-day creative mind might need.



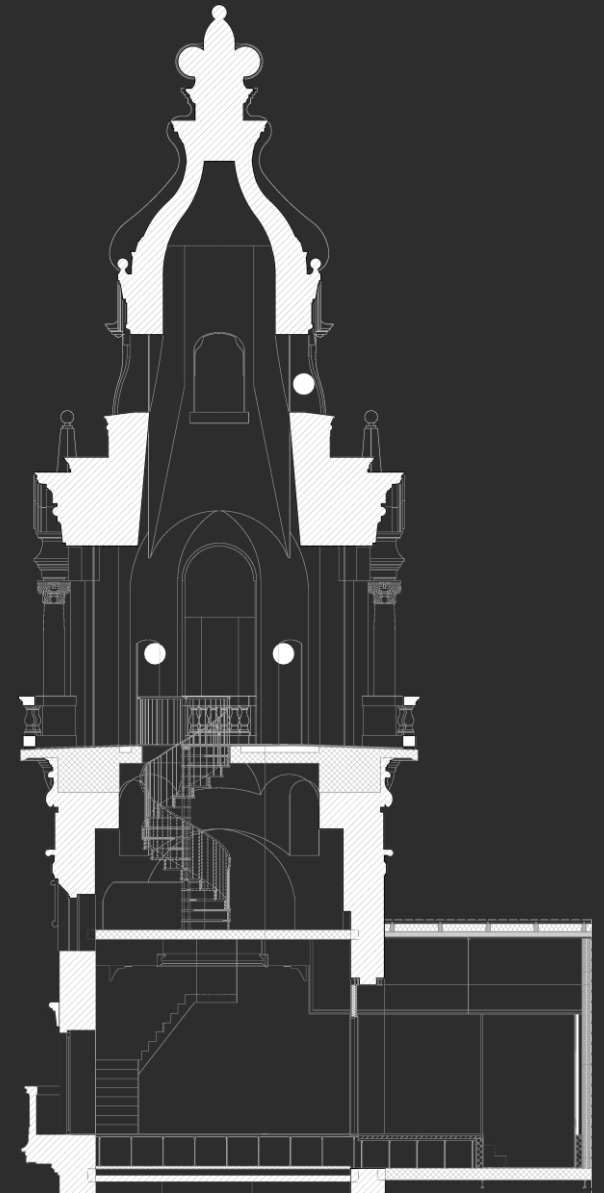


CROWN TOWER SUITE

STRIKING VIEWS OF BUDAPEST FROM YOUR OWN TOWER

Crowning Matild Palace with its 5th-floor location, the one-bedroom Tower Suite is the first suite in Hungary with a 48-meter high dedicated tower, providing breathtaking 360-degree views of the city and Danube River over the rooftops of Budapest.

The unique design of the tower, inspired by the crown of Archduke Joseph Karl of Austria, boasts 76 square meters of space across two floors boasting a remarkable bathroom.



MARIA KLOTILD ROYAL SUITE

The 150 square meters one-of-a-kind Maria Klotild Royal Suite provides awe-inspiring views of the Danube River, and features a spacious master bedroom with panelled doors and walls, a spacious bathroom including a sculptural crystal pendant, a luxurious mix of mosaics and book matched white marble, a living room with a mix of modern and historical furniture items, a dining table for eight, and a separate study room.

Two additional rooms can be connected to create a spacious three-bedroom apartment with over 270sqm of space.





MARIA KLOTILD ROYAL SUITE, BEDROOM

THE
LUXURY
COLLECTION



MATILD
PALACE HOTEL
BUDAPEST

MARIA KLOTILD ROYAL SUITE, BATHROOM

THE
LUXURY
COLLECTION®

CULINARY DELIGHTS

Menu
local beets
thyme infused fillet
and short ribs
pastry

A TRUE EPICUREAN DESINATION

EXCEPTIONAL VENUES

The Matild Palace brings a new era of entertainment and gastronomy to the city with its world-class venues as well as contemporary cabaret shows.

The four distinctive dining venues are conceptualized by the Michelin Starred Chef Alec Howard and headed by the master curator and a trendsetter in cuisine, Michelin Starred Chef Eszter Palagyi from Budapest.



A NEW ERA OF CULINARY EXCELLENCE

ESZTER PALAGYI

Executive Chef Ezster Palágyi is the master curator behind the culinary creations at the dining venues of Matild Palace Budapest.

Named by CNN International* as The chef driving Hungary's food revolution, Chef Palágyi got her Michelin star in March 2016 as the youngest female chef of Central Europe, and at the age of 32, she has already won Hungary's chef of the year award 3 times in a row.

Chef Palágyi cooks the traditional Hungarian cuisine with a modern twist and her emphasis is on simple dishes, expertly prepared, and inspired by the produce of the region.



*Source: cnn.com

PIAC

NEW HUNGARIAN FOOD HALL

Piac, meaning ‘The Market’ is the hotel’s 120-seat iconic food hall. Due to the casual atmosphere of the restaurant, it is the go-to destination for gastronomic open-kitchen excellence. Iconic dishes are reimaged thanks to celebrity Chef Palágyi, who cooks the traditional Hungarian cuisine with a modern twist places emphasis on simple dishes, expertly prepared, and inspired by the produce of the region. The restaurant also features a selection of Hungarian wines and weekly wine tastings, Hungarian hams, handmade pasta selections, and cheeses which are available to buy from the in-house Delicatessen.





PIAC
MATILD PALACE, A LUXURY COLLECTION HOTEL, BUDAPEST

NEW HUNGARIAN
FOOD HALL

PIAC

MATILD CAFÉ & CABARET

THE RE-BIRTH OF A BUDAPEST ICON

The Matild Café, formally named the Belvarosi Café, dates back to 1901. The restoration of the two-storey café is a dramatic re-imagination of the most popular address for local elite and influencers of the Belle Epoque era, and the first café in Budapest after World War 2.

A flawless coffee, bar, and pastry counter that also produces the exquisite Matild Cake, offers central European comfort food and peerless service in an authentic and historic room.



MATILD CAFÉ & CABARET

LATE-NIGHT CHIC

This iconic gem of Budapest which is under monumental protection has been lovingly restored and renamed to represent its truly majestic home, bringing back the late-night chic with cabaret shows from the 1960s.

The daytime is easy-going at the café, and at night the Hungarian and international cabaret shows, performed on the hydraulic elevated stage, which was uncovered during the excavation, turn Matild Café into a distinguished, glamorous, exciting and lively sociable hub of the city.





MATILD CAFE & CABARET
MATILD PALACE, A LUXURY COLLECTION HOTEL, BUDAPEST

MATILD
CAFE



DUNA LOUNGE & BISTRO
MATILD PALACE, A LUXURY COLLECTION HOTEL, BUDAPEST

DUNN
LOUNGE & BISTRO

THE
LUXURY
COLLECTION®

GASTRO STREET

Bringing together these venues, Matild Palace Budapest introduces an exquisite new dimension to the dining scene of the city with a brand new gastronomic destination: The first Gastro Street in Budapest, a 7 meters by 80 meters culinary paradise available year long and led by visionary epicureans, seducing your senses with simple aromas, local cuisine, and the buzz of fashionable society.



MATILD
CAFE

DUNN
LOUNGE & BISTRO

Piac

NEW HUNGARIAN
FOOD HALL

THE DUCHESS

BUDAPEST'S MOST ENTICING BAR STORY

The Duchess is a secret rooftop
liqueur library and garden inspired by
the Arch Duchess Maria Klotild.

This glamorous hideaway boasts
enviable 360-degree views of
Budapest with sumptuous chill-out
areas designed to relax and unwind
the night away with friends. Accessed
through a hidden entrance it is the
gateway to a concealed and decadent
story of glamour and stunning
mixology blended by a carefully
curated soundtrack.

Such is its appeal; locals are hailing it
as the place to be and be seen.





THE DUCHESS, ROOFTOP BAR
MATILD PALACE, A LUXURY COLLECTION HOTEL, BUDAPEST



THE DUCHESS, ROOFTOP TERRACE
MATILD PALACE, A LUXURY COLLECTION HOTEL, BUDAPEST

MEETINGS AND EVENTS



EXCEPTIONAL MEETINGS & EVENT SPACES

EXQUISITE MEETINGS

Matild Palace is poised to handle all business meetings or special events, whether large or more intimate.

The grand architecture of the hotel makes the perfect backdrop for corporate get-togethers and grand galas, and with dedicated planning experts on hand, the latest audio-visual equipment and custom floor plans, one can feel assured that the meeting or event will be truly memorable.

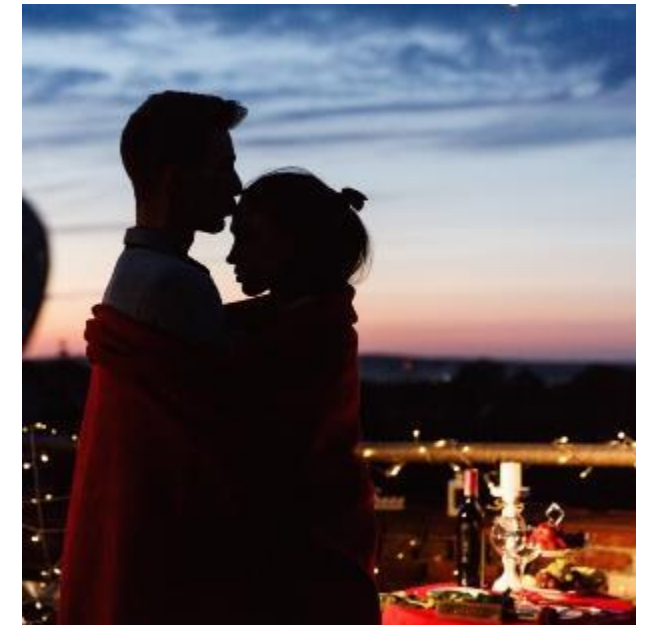


WEDDINGS AND PRIVATE EVENTS

ICONIC CELEBRATIONS

Whether it's a love story brought to life, a small and romantic wedding gathering, or a distinctive birthday or anniversary, Matild Palace, is the ideal location for such iconic life celebrations.

The hotel's talented culinary team and event planners will transform your vision into an unforgettable experience.





BANQUET HALL
MATILD PALACE, A LUXURY COLLECTION HOTEL, BUDAPEST

SWAN SPA



SWAN SPA

AN ELEGANTLY CRAFTED EXPERIENCE

Explore indigenous therapies at Swan Spa, the oasis of relaxation inspired by the Hungarian bath culture and the swan, a symbol of grace and beauty.

Indulge in our two treatment rooms including a couples suite, salt room, hammam, sauna and steam room for a Hungarian getaway.

For our guests that desire a more physical mind and body program, an ideal workout is available at our fitness center, which is outfitted with the latest Technogym® equipment.





SWAN SPA RECEPTION
MATILD PALACE, A LUXURY COLLECTION HOTEL, BUDAPEST

SWAN SPA RELAXING AREA
MATILD PALACE, A LUXURY COLLECTION HOTEL, BUDAPEST



SWAN SPA COUPLE TREATMENT SUITE
MATILD PALACE, A LUXURY COLLECTION HOTEL, BUDAPEST

MATILD PALACE, A LUXURY COLLECTION HOTEL, BUDAPEST

PROPERTY CONTACTS

Property Address

Vaci Utca 36, 1056 Budapest, Hungary

T: +36 (1) 550 50 00

E: sales.inquiry@matildpalace.com

Pre-opening Office

Central Palace, Karolyi Utca 9

1053 Budapest, Hungary

Property Contacts

Sara Brenner – Director of Sales

M:+36 (70) 604 4925

Enrica Maresca – Senior Sales Manager

M:+36 (70) 634 8554



MATILD
PALACE HOTEL
BUDAPEST

THE
LUXURY
COLLECTION®



MATILD
PALACE HOTEL
BUDAPEST

AN ICON RETURNS.
YOUR STORY BEGINS.

